

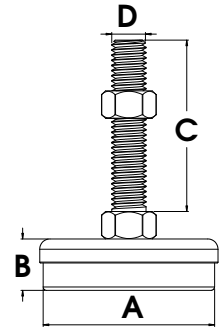
# Levelling Feet

FIXED - STEEL/RUBBER & STEEL/NYLON



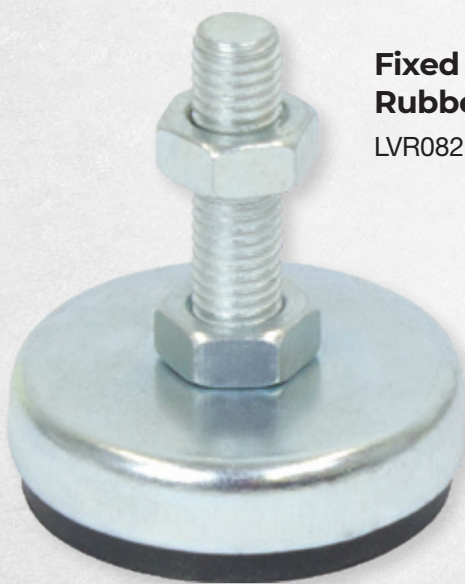
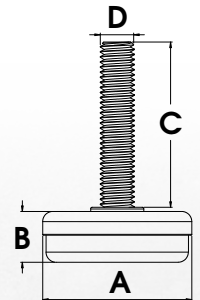
## FIXED - STEEL/RUBBER

Part Number	Size	Base Diameter (A)	Base Height (B)	Thread Length (C)	Thread (D)	Load Capacity
LVR074	30 x M6	30mm	15mm	50mm	M6	200kg
LVR075	30 x M8	30mm	15mm	50mm	M8	200kg
LVR076	40 x M8	40mm	17mm	50mm	M8	300kg
LVR078	40 x M10	40mm	17mm	50mm	M10	300kg
LVR080	50 x M10	50mm	17mm	50mm	M10	450kg
LVR082	50 x M12	50mm	17mm	50mm	M12	450kg
LVR085	60 x M10	60mm	20mm	100mm	M10	600kg
LVR087	60 x M12	60mm	20mm	100mm	M12	600kg



## FIXED- STEEL/NYLON

Part Number	Size	Base Diameter (A)	Base Height (B)	Thread Length (C)	Thread (D)	Load Capacity
LVR069A	25 x M6	25mm	10mm	25mm	M6	200kg
LVR070	25 x M8	25mm	10mm	25mm	M8	200kg
LVR071	35 x M8	35mm	12mm	25mm	M8	300kg
LVR072	35 x M10	35mm	12mm	45mm	M10	350kg
LVR073A	40 x M10	40mm	14mm	45mm	M10	500kg
LVR073	40 x M10	40mm	14mm	25mm	M10	500kg



**Fixed Steel/  
Rubber Foot**  
LVR082



**Fixed Steel/  
Nylon Foot**  
LVR070