

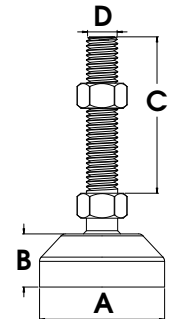
# Levelling Feet

## FIXED - RUBBER & STEEL BASE



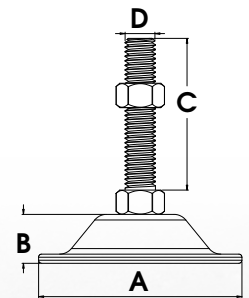
### FIXED - RUBBER BASE

Part Number	Size	Base Diameter (A)	Base Height (B)	Thread Length (C)	Thread (D)	Load Capacity
LVR118	60 x M10	60mm	25mm	50mm	M10	500kg
LVR119	60 x M10	60mm	25mm	100mm	M10	500kg
LVR121	60 x M12	60mm	25mm	100mm	M12	500kg
LVR123	70 x M16	70mm	30mm	150mm	M16	500kg
LVR125	70 x M20	70mm	30mm	150mm	M20	500kg



### FIXED - STEEL BASE

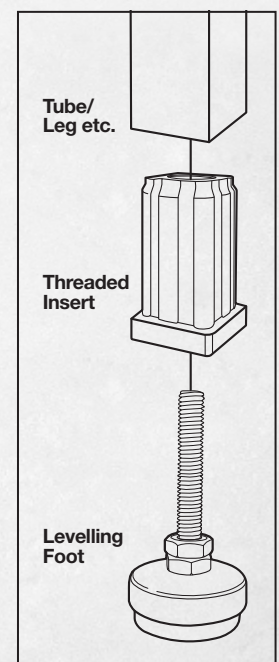
Part Number	Size	Base Diameter (A)	Base Height (B)	Thread Length (C)	Thread (D)	Load Capacity
LVR088	38 x M8	38mm	11mm	50mm	M8	150kg
LVR089	38 x M8	38mm	11mm	100mm	M8	150kg
LVR090	38 x M10	38mm	11mm	50mm	M10	150kg
LVR093	60 x M10	60mm	11mm	100mm	M10	300kg
LVR095	60 x M12	60mm	11mm	100mm	M12	300kg
LVR096	80 x M16	80mm	13mm	100mm	M16	500kg
LVR098	80 x M20	80mm	13mm	100mm	M20	500kg
LVR101	100 x M20	100mm	20mm	150mm	M20	700kg



**Fixed Foot  
Rubber Base**  
LVR118



**Fixed Foot  
Steel Base**  
LVR095



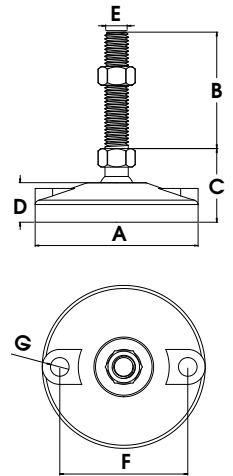
# Levelling Feet

## BOLT DOWN & FIXED - RUBBER BASE



### BOLT DOWN

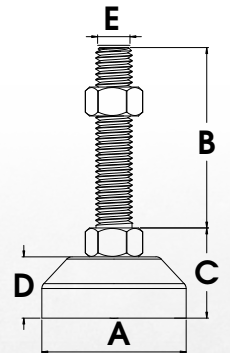
Part Number	Size	Base Diameter (A)	Thread Height (B)	Base Thread Height (C)	Base Height (D)	Thread (E)	Hole Centres (F)	Hole Diameter (G)	Load Capacity
LVR8008100B	80 x M8	80mm	100mm	35mm	18mm	M8	56mm	10mm	350kg
LVR8010100B	80 x M10	80mm	100mm	32mm	18mm	M10	56mm	10mm	500kg
LVR8012100B*	80 x M12	80mm	100mm	33mm	18mm	M12	56mm	10mm	800kg
LVR8012150B	80 x M12	80mm	150mm	35mm	18mm	M12	56mm	10mm	800kg
LVR10012100B	100 x M12	100mm	100mm	41mm	29mm	M12	73mm	13mm	800kg
LVR10012150B	100 x M12	100mm	150mm	44mm	29mm	M12	73mm	13mm	800kg
LVR10016150B	100 x M16	100mm	150mm	45mm	28mm	M16	73mm	13mm	1000kg
LVR12716150B	127 x M16	127mm	150mm	47mm	29mm	M16	102mm	13mm	1000kg
LVR12720150B	127 x M20	127mm	150mm	47mm	30mm	M20	102mm	13mm	1000kg



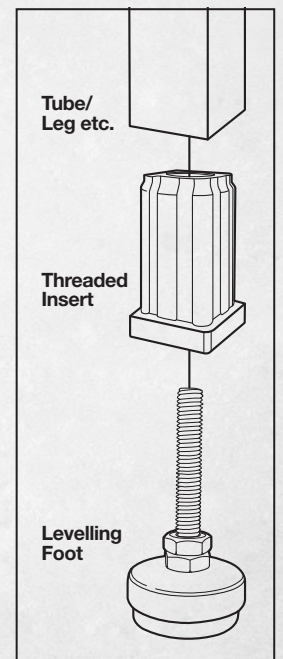
For stainless steel option add SS to the part number, eg. LVR8008100BSS. Models marked \* not available in stainless steel

### FIXED

Part Number	Size	Base Diameter (A)	Thread Height (B)	Base Thread Height (C)	Base Height (D)	Thread (E)	Load Capacity
LVR500850F	50 x M8	50mm	50mm	31mm	23mm	M8	350kg
LVR501050F	50 x M10	50mm	50mm	31mm	23mm	M10	500kg
LVR601250F	60 x M12	60mm	50mm	33mm	25mm	M12	800kg
LVR6012100F	60 x M12	60mm	100mm	33mm	25mm	M12	800kg
LVR6016150F	60 x M16	60mm	150mm	35mm	25mm	M16	1000kg
LVR6020150F	60 x M20	60mm	150mm	35mm	25mm	M20	1000kg
LVR8012100F*	80 x M12	80mm	100mm	40mm	30mm	M12	500kg
LVR8012150F	80 x M12	80mm	150mm	40mm	30mm	M12	500kg
LVR8016150F*	80 x M16	80mm	150mm	40mm	30mm	M16	800kg
LVR8020150F	80 x M20	80mm	150mm	40mm	30mm	M20	1000kg



For stainless steel option add SS to the part number, eg. LVR500850FSS. Models marked \* not available in stainless steel



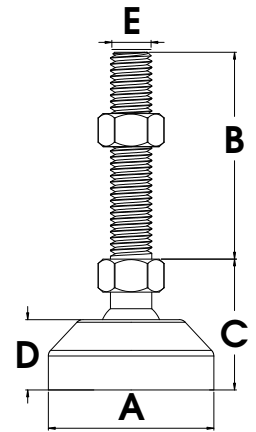
# Levelling Feet

## BALL JOINTED - RUBBER BASE



### BALL JOINTED

Part Number	Size	Base Diameter (A)	Thread Height (B)	Base Thread Height (C)	Base Height (D)	Thread (E)	Load Capacity
LVR400850S	40 x M8	40mm	50mm	30mm	17mm	M8	350kg
LVR4008100S	40 x M8	40mm	100mm	33mm	17mm	M8	350kg
LVR401050S	40 x M10	40mm	50mm	30mm	16mm	M10	500kg
LVR4010100S	40 x M10	40mm	100mm	32mm	18mm	M10	500kg
LVR600850S	60 x M8	60mm	50mm	36mm	24mm	M8	350kg
LVR601050S	60 x M10	60mm	50mm	36mm	24mm	M10	500kg
LVR6010100S	60 x M10	60mm	100mm	38mm	24mm	M10	500kg
LVR601250S	60 x M12	60mm	50mm	36mm	24mm	M12	800kg
LVR6012100S	60 x M12	60mm	100mm	36mm	24mm	M12	800kg
LVR801250S	80 x M12	80mm	50mm	36mm	24mm	M12	800kg
LVR8012100S	80 x M12	80mm	100mm	36mm	24mm	M12	800kg
LVR8016100S	80 x M16	80mm	100mm	38mm	23mm	M16	1000kg
LVR8016150S	80 x M16	80mm	150mm	38mm	24mm	M16	1000kg
LVR8020100S	80 x M20	80mm	100mm	42mm	23mm	M20	1000kg
LVR8020150S	80 x M20	80mm	150mm	42mm	24mm	M20	1000kg



For stainless steel option add SS to the part number, eg. LVR400850SSS



**Ball Jointed Foot**

LVR400850S



**Ball Jointed Foot**

LVR6010100S



**Ball Jointed Foot**

LVR8020150S

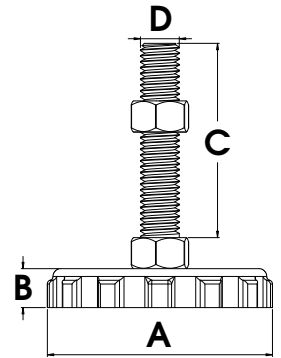
# Levelling Feet

## FIXED - NYLON & NYLON CONE



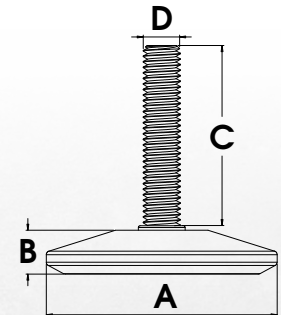
### FIXED - NYLON KNOB

Part Number	Size	Base Diameter (A)	Base Height (B)	Thread Length (C)	Thread (D)	Load Capacity
LVR057	25 x M8	25mm	10mm	50mm	M8	100kg
LVR059	38 x M8	38mm	10mm	50mm	M8	200kg
LVR060	38 x M10	38mm	10mm	50mm	M10	200kg
LVR062	50 x M10	50mm	10mm	50mm	M10	300kg
LVR063	50 x M10	50mm	10mm	100mm	M10	300kg
LVR064	50 x M12	50mm	10mm	50mm	M12	300kg
LVR065	50 x M12	50mm	10mm	100mm	M12	300kg
LVR066	63 x M10	63mm	10mm	30mm	M10	500kg
LVR067	63 x M10	63mm	10mm	100mm	M10	500kg
LVR068	63 x M12	63mm	10mm	50mm	M12	500kg
LVR069	63 x M12	63mm	10mm	100mm	M12	500kg



### FIXED - NYLON CONE

Part Number	Size	Base Diameter (A)	Base Height (B)	Thread Length (C)	Thread (D)	Load Capacity
LVR051	40 x M8	40mm	13mm	50mm	M8	100kg
LVR052	50 x M10	50mm	13mm	50mm	M10	150kg
LVR053	60 x M12	60mm	13mm	50mm	M12	200kg



**Fixed Nylon Knob Foot**  
LVR057



**Fixed Nylon Cone Foot**  
LVR051

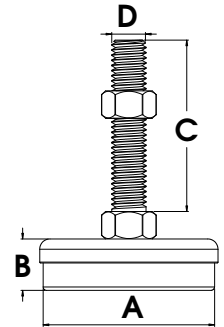
# Levelling Feet

FIXED - STEEL/RUBBER & STEEL/NYLON



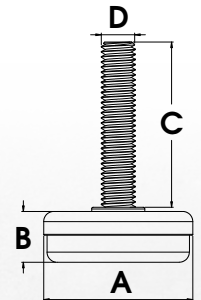
## FIXED - STEEL/RUBBER

Part Number	Size	Base Diameter (A)	Base Height (B)	Thread Length (C)	Thread (D)	Load Capacity
LVR074	30 x M6	30mm	15mm	50mm	M6	200kg
LVR075	30 x M8	30mm	15mm	50mm	M8	200kg
LVR076	40 x M8	40mm	17mm	50mm	M8	300kg
LVR078	40 x M10	40mm	17mm	50mm	M10	300kg
LVR080	50 x M10	50mm	17mm	50mm	M10	450kg
LVR082	50 x M12	50mm	17mm	50mm	M12	450kg
LVR085	60 x M10	60mm	20mm	100mm	M10	600kg
LVR087	60 x M12	60mm	20mm	100mm	M12	600kg



## FIXED- STEEL/NYLON

Part Number	Size	Base Diameter (A)	Base Height (B)	Thread Length (C)	Thread (D)	Load Capacity
LVR069A	25 x M6	25mm	10mm	25mm	M6	200kg
LVR070	25 x M8	25mm	10mm	25mm	M8	200kg
LVR071	35 x M8	35mm	12mm	25mm	M8	300kg
LVR072	35 x M10	35mm	12mm	45mm	M10	350kg
LVR073A	40 x M10	40mm	14mm	45mm	M10	500kg
LVR073	40 x M10	40mm	14mm	25mm	M10	500kg



**Fixed Steel/  
Rubber Foot**  
LVR082



**Fixed Steel/  
Nylon Foot**  
LVR070