

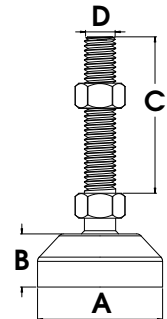
Levelling Feet

FIXED - RUBBER & STEEL BASE



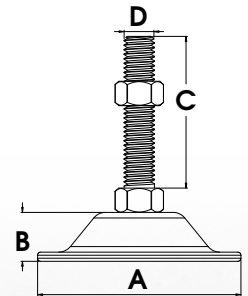
FIXED - RUBBER BASE

Part Number	Size	Base Diameter (A)	Base Height (B)	Thread Length (C)	Thread (D)	Load Capacity
LVR118	60 x M10	60mm	25mm	50mm	M10	500kg
LVR119	60 x M10	60mm	25mm	100mm	M10	500kg
LVR121	60 x M12	60mm	25mm	100mm	M12	500kg
LVR123	70 x M16	70mm	30mm	150mm	M16	500kg
LVR125	70 x M20	70mm	30mm	150mm	M20	500kg



FIXED - STEEL BASE

Part Number	Size	Base Diameter (A)	Base Height (B)	Thread Length (C)	Thread (D)	Load Capacity
LVR088	38 x M8	38mm	11mm	50mm	M8	150kg
LVR089	38 x M8	38mm	11mm	100mm	M8	150kg
LVR090	38 x M10	38mm	11mm	50mm	M10	150kg
LVR093	60 x M10	60mm	11mm	100mm	M10	300kg
LVR095	60 x M12	60mm	11mm	100mm	M12	300kg
LVR096	80 x M16	80mm	13mm	100mm	M16	500kg
LVR098	80 x M20	80mm	13mm	100mm	M20	500kg
LVR101	100 x M20	100mm	20mm	150mm	M20	700kg



**Fixed Foot
Rubber Base**
LVR118



**Fixed Foot
Steel Base**
LVR095

