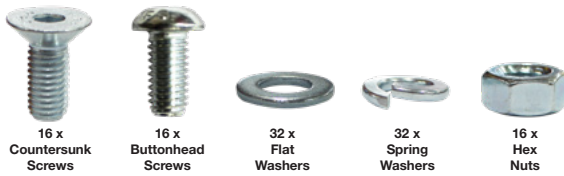


# Rotationally Moulded Tub Assembly Guide

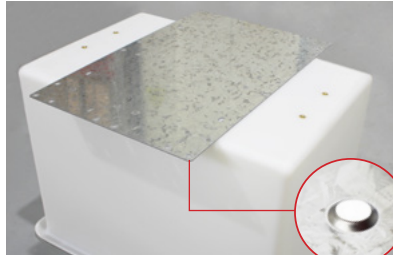
## Fasteners Required



## Tools Required

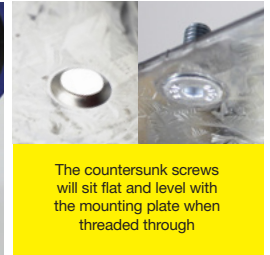


**STEP 1.** Lay the tub upside down on the ground.



**STEP 2.** Take the baseplate and rest it across the base of the tub.

The countersunk holes should be on the bottom of the plate, facing the ground.



The countersunk screws will sit flat and level with the mounting plate when threaded through.

**STEP 3.** Place the castor on the mounting plate and push the countersunk screws through the mounting plate and the baseplate of the castor.



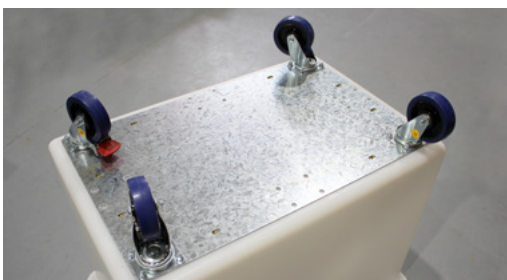
**STEP 4.** Take 1x spring washer, 1x flat washer, and 1x Hex Nut and hand-tighten to each of the countersunk screws.



**STEP 5.** Repeat steps 3 & 4 for each castor until all are fitted to the mounting plate.



**STEP 6.** Using a 13mm socket and a 5mm allen key tighten all of the fasteners on the mounting plate.



**STEP 7.** Rotate the mounting plate into place ready to fasten to the tub.



**STEP 8.** Take 1x buttonhead screw, 1x spring washer, and 1x flat washer and thread through the mounting plate. Tighten with the 5mm Allen Key.



**STEP 9.** Repeat step 8 for each of the threaded holes on the base of the tub until all are fully tightened.



**You're all done!**  
The tub is now assembled