

**New
Models
Available**

Ball Transfers

Commonly used around presses, guillotines and packing machines, Richmond's Ball Transfers enable smooth and simple transfers of objects in any direction. Multi directional movement is essential where the need to move heavy loads is paramount.

Consisting of a large load bearing roller sitting upon many smaller balls encapsulated in a cup, the engineering in this design makes for a perfect transfer station from one conveyor to another. Richmond can customise ball transfer tables to suit your application whether the requirement is for a recessed transfer table or multiple ball transfers in a designated area.



BTR019

Mild Steel/Carbon Steel Ball Transfers

BTR001

Load Capacity: 45kg
Ball Diameter: 25.4mm
Ball Material: Mild Steel
Hole Centres: 55.7mm



BTR018

Load Capacity: 90kg
Ball Diameter: 38mm
Ball Material: Zinc Plated Steel
Hole Centres: 62mm



BTR006

Load Capacity: 50kg
Ball Diameter: 16mm
Ball Material: Carbon Steel
Base Diameter: 36mm



BTR005

Load Capacity: 50kg
Ball Diameter: 25.4mm
Ball Material: Carbon Steel
Thread: M6 x 17mm



BTR003

Load Capacity: 15kg
Ball Diameter: 15.8mm
Ball Material: Carbon Steel
Hole Centres: 33mm



BTR025

Load Capacity: 45kg
Ball Diameter: 25.4mm
Ball Material: Zinc Plated Steel
Hole Centres: 56mm



Stainless Steel Ball Transfers

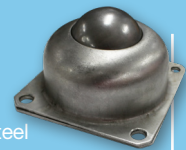
BTR020

Load Capacity: 45kg
Ball Diameter: 25.4mm
Ball Material: 304 Stainless Steel
Hole Centres: 55mm



BTR019

Load Capacity: 90kg
Ball Diameter: 38mm
Ball Material: 304 Stainless Steel
Hole Centres: 62mm



BTR029

Load Capacity: 50kg
Ball Diameter: 16mm
Ball Material: 304 Stainless Steel
Base Diameter: 36mm



BTR017

Load Capacity: 50kg
Ball Diameter: 25.4mm
Ball Material: 304 Stainless Steel
Base Diameter: 36mm



BTR022

Load Capacity: 227kg
Ball Diameter: 30mm
Ball Material: 304 Stainless Steel
Base Diameter: 45mm



BTR016

Load Capacity: 45kg
Ball Diameter: 25.4mm
Ball Material: 304 Stainless Steel
Thread: 10mm x 17mm



BTR026

Load Capacity: 15kg
Ball Diameter: 15.8mm
Ball Material: 304 Stainless Steel
Hole Centres: 31mm



BTR015

Load Capacity: 45kg
Ball Diameter: 25.4mm
Ball Material: 304 Stainless Steel
Hole Centres: 56mm



**Richmond can custom design
& manufacture ball transfer
tables to suit your specifications.**